

# South Sound Shellfish Recovery



# South Sound Clean Water Partners

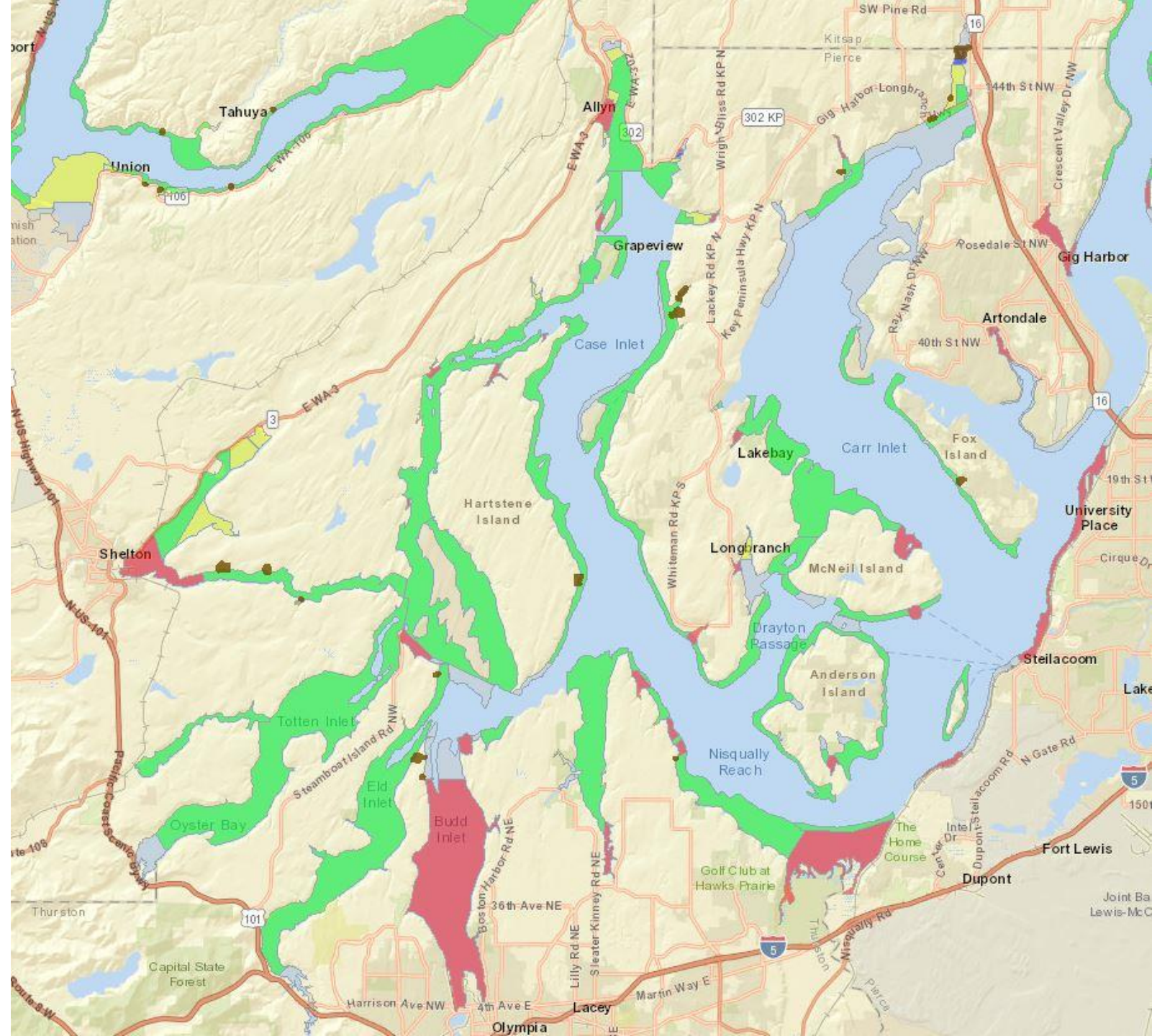
- A partnership approach to protecting and improving water quality in South Sound shellfish watersheds.
- Provide a coordinated response to all aspects of pollution prevention, identification, and correction.
- Recover downgraded areas and prevent downgrades.



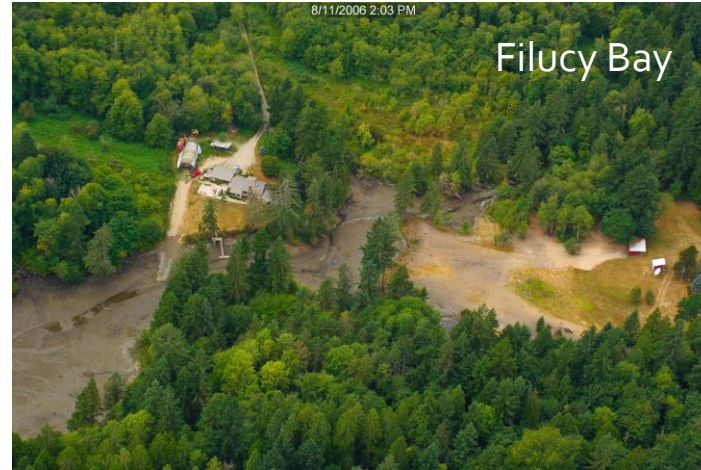
Nisqually Reach



# South Sound Shellfish Growing Areas



# Original Shellfish NTA Proposal



- Limited to Shellfish Protection Districts
- Fully implement Closure Response Plans
- Pierce: Burley Lagoon, Rocky Bay, Filucy Bay, Vaughn Bay
- Mason: Oakland Bay, McLane Cove
- Thurston: Henderson Inlet/Nisqually Reach, Totten/Little Skookum
- Categories defined by Shellfish Partners Strategic Plan
- \$5.6 million
- Offered \$300,000 + \$100,000 AHSS contribution



# Shellfish NTA 1.0



## Partners

- Pierce County SWM
- Tacoma-Pierce County Health Department
- Pierce Conservation District
- Mason Conservation District
- Thurston Public Health & Social Services
  - -Thurston Conservation District

## Components

- June 30, 2018 – December 31, 2018 extension
- Reduced geography
- Water quality sampling & QAPPs
- Planning & coordination
- Septic systems
- Agriculture
- Stormwater
- Education & outreach

# Shellfish NTA 1.0 Progress

## Completed

- QAPPs are complete
- Fact Sheet is complete
- Water Quality Report Published
- Investigation Flow Chart
- Watershed Field Screening Reports

## In Process

- Agreements
- Water Quality Sampling
- Identification of problem septic systems
- Livestock owner technical assistance
- List of prospective BMPs

# Shellfish NTA 2.0

- Tiered proposal
- Offered \$732,000 + \$100,000 AHSS contribution
- Add Mason Public Health as partner
- Add to areas: North Bay, Burley Lagoon, & Rocky Bay
- Focus on addressing largest gaps in need and follow up on NTA 1.0 findings
- Coordinating with Shellfish SIAT
- In contract process



Oakland Bay



# Shellfish NTA 3.0

- New submittal – 2019-2023
- Organized around new Closure Response Plan template format
- Add new Shellfish Protection Districts
- Add tribes
- Add “Threatened” and “Concerned” areas
- Add prevention areas
- Components:
  - Identify current resources (staff & cash)
  - Define optimal program
  - Identify gap
  - Both ongoing and one-time needs



North Bay - Allyn



# Program Benefits & Challenges

## Benefits

- More resources
- Share expertise
- Prioritize and address problems regionally
- Accountability
- Address wider variety of issues
- Administrative efficiency

## Challenges

- Contracting
- Coordination
- Learning curve



Burley Lagoon

# Contact Information



Barbara Ann Smolko

[bsmolko@co.pierce.wa.us](mailto:bsmolko@co.pierce.wa.us)

(253) 798-6156

Jeff Barney

[jbarney@co.pierce.wa.us](mailto:jbarney@co.pierce.wa.us)

(253) 798-7620



Rocky Bay