



Alliance for a Healthy South Sound LIO Council Meeting

FEBRUARY 19, 2026

In the chat, please share
your name, affiliation,
and your favorite winter
Olympic sport to watch?

Agenda

Time	Session	Speakers
10:00am	Welcome & Get Settled	Haley Morris
10:05am	Pierce County Urban Forestry Management Plan	Ann Koenig, Pierce County
10:35am	Thurston County Tree Canopy	Claire Swearingen, Thurston County
11:05am	Floodplains and Estuaries Action Plan Process	Elizabeth McManus
11:25am	AHSS LIO Updates	Elizabeth McManus
11:45am	Round Robin	All
11:55am	Wrap-up & Next Steps	Elizabeth McManus
12:00 - Adjourn and Enjoy the Day!		

An aerial photograph of a city, likely Tacoma, Washington, showing a mix of residential and commercial buildings, green spaces, and a road network. The image is overlaid with a semi-transparent teal bar at the bottom. The title text is centered over the image.

Pierce County Urban Forestry Management Plan

Ann Koenig, Pierce County



Pierce County Urban Forestry Actions

Alliance for a Healthy South Sound
Local Integrating Organization Council Meeting

February 19, 2026

Ann Koenig, Pierce County Urban Forest Planner

Overview

- Pierce County's Sustainability 2030 Plan
- Nature-Based Climate Solutions
- Urban Forestry Actions for 2026/2027
 - Pierce County Urban Forestry Management Plan
 - Urban, unincorporated residential tree planting program
- Pierce County's Sustainability Board



Explore the Sustainability 2030 Plan

www.piercecountywa.gov/2058/Sustainability-2030



2025 Update

SUSTAINABILITY 2030

About The Plan

Sustainability 2030 is Pierce County's Resilience and Climate Action Plan, first adopted in 2021. It is a science-based roadmap that aligns with Washington State's climate goals. Every two years, Pierce County's Office of Resilience and Climate Action (ORCA) updates the Plan based on progress and community feedback.

Our Goals

- Reduce greenhouse gas (GHG) emissions by 45% below 2015 levels by 2030.
- Improve air and water quality, protect natural resources, and support public health.
- Increase community and ecosystem resilience to climate impacts.

How we get there

The Plan includes biennial updates based on input from community groups, residents, and local partners. The Plan features 22 Community Priority Actions focused on:

- Sustainable land use and protecting ecosystems.
- Enhancing resilience to climate impacts.
- Strengthening the green economy.
- Supporting community leadership in climate action.

Areas of Focus

- Energy & Buildings**
Transition new/existing buildings to clean energy and increase renewable energy resources.
- Transportation**
Reduce vehicle miles traveled, encourage public transit and support vehicle electrification.
- Waste Reduction**
Reduce and keep waste out of the landfill, and make waste services cleaner and greener.
- Nature-Based Climate Solutions**
Restore nature, use land and water wisely, expand green spaces and support human health.
- Education & Outreach**
Increase youth, community and employee engagement in climate action.
- Growing Community Capacity**
Strengthen partnerships, support local leaders and businesses, and share best practices.
- County Actions**
Internal County actions that will help us meet our emissions reduction goal.

PierceCountyWa.Gov/Sustainability2030 | ppwsustainability@piercecountywa.gov



About The Plan

Sustainability 2030 is Pierce County's Resilience and Climate Action Plan, first adopted in 2021. It is a science-based roadmap that aligns with Washington State's climate goals. Every two years, Pierce County's Office of Resilience and Climate Action (ORCA) updates the Plan based on progress and community feedback.



Our Goals

- Reduce greenhouse gas (GHG) emissions by 45% below 2015 levels by 2030.
- Improve air and water quality, protect natural resources, and support public health.
- Increase community and ecosystem resilience to climate impacts.



How we get there

The Plan includes biennial updates based on input from community groups, residents, and local partners. The Plan features 22 Community Priority Actions focused on:

- Sustainable land use and protecting ecosystems.
- Enhancing resilience to climate impacts.
- Strengthening the green economy.
- Supporting community leadership in climate action.

Areas of Focus



Energy & Buildings

Transition new/existing buildings to clean energy and increase renewable energy resources.



Transportation

Reduce vehicle miles traveled, encourage public transit and support vehicle electrification.



Waste Reduction

Reduce and keep waste out of the landfill, and make waste services cleaner and greener.



Nature-Based Climate Solutions

Restore nature, use land and water wisely, expand green spaces and support human health.



Education & Outreach

Increase youth, community and employee engagement in climate action.



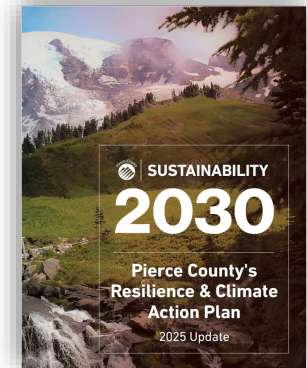
Growing Community Capacity

Strengthen partnerships, support local leaders and businesses, and share best practices.

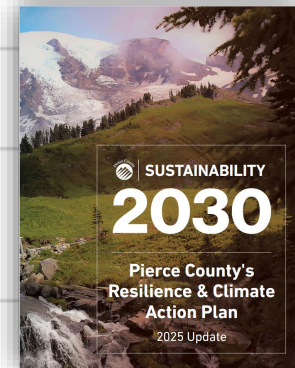


County Actions

Internal County actions that will help us meet our emissions reduction goal.



Nature-based Climate Solutions




Lead: PPW - LRP
Support: PPW - ORCA, PPW - SWM

Lead: PPW - ORCA
Support: PPW - SWM

Lead: PPW - ORCA
Support: PPW - SWM


Lead: Tribes, PPW - ORCA
Support: PPW - LRP, Parks


Lead: PPW - ORCA
Support: PPW - LRP, PPW - SWM, Parks 


Lead: PPW - ORCA
Support: Parks


Lead: PPW - Solid waste
Support: PPW - ORCA, PPW - SWM

Lead: PPW - SWM
Support: PPW - ORCA

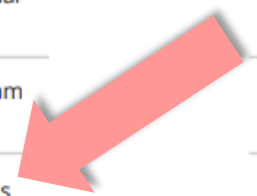
Lead: PPW - ORCA
Support: PPW - LRP, PPW - SWM, Parks 

Lead: PPW - ORCA
Support: PPW - SWM, Parks 

Lead: PPW - ORCA
Support: Parks 

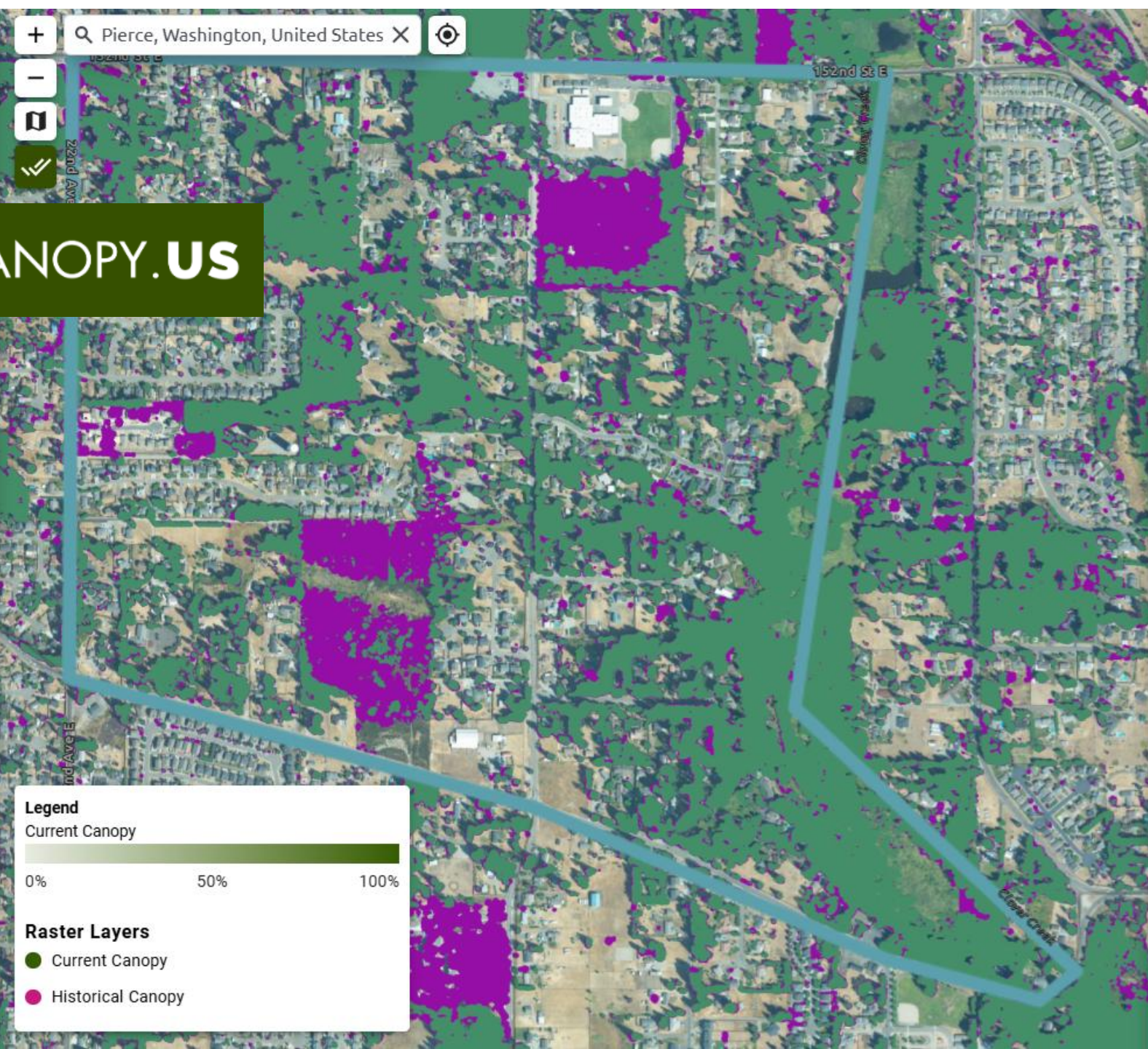
Lead: PPW - ORCA
Support: PPW - SWM, Parks 

Strategies	Actions
Protect, Connect & Restore Ecosystems	NCS Action 1 Blue Carbon: Partner with Washington Department of Natural Resources to map and analyze eelgrass presence in unincorporated Pierce County nearshore and develop regulations to protect eelgrass beds.
	NCS Action 2 Salmon Recovery: Create a Pierce County Salmon Recovery Plan to accelerate salmon habitat restoration, protect endangered Southern Resident Orcas, and coordinate collaboration.
	NCS Action 3 Whale Recovery: Support Whale (Orcas, Humpbacks, Grey, Minke and other cetaceans) protection and recovery efforts in the South Puget Sound through public engagement, habitat and prey conservation, and enforcement of whale protection laws. Work with Tribes, community partners, non-profits, and government agencies to organize and advance whale protection and recovery work.
	NCS Action 4 Prairie Conservation: Work with local Tribes and conservation organizations to identify remaining prairie lands and conservation priorities that promote biodiversity and endangered species protection.
Promote Sustainable Land and Water Management	NCS Action 5 Land Conservation: Develop a funding strategy and tracking metrics to advance the County's goal of conserving up to 100,000 acres for carbon sequestration, biodiversity, flood protection, and other ecosystem services.
	NCS Action 6 Land Practices: Support small forest landowners and farmers with best management practices through technical assistance programs in partnership with Pierce Conservation District and WSU extension.
	NCS Action 7 Biochar: Conduct feasibility study for a biochar production and evaluate opportunities to integrate biochar into forest, agricultural, and stormwater projects for water quality, soil health, and carbon sequestration benefits.
Expand Urban Green Spaces	NCS Action 8 Green Stormwater Infrastructure: Accelerate and expand the Green Stormwater Mini Grants program with Pierce Conservation District which funds raingardens, rain tanks, and de-paving projects.
	NCS Action 9 Urban Forestry: Identify priority urban forestry sites and implement a tree planting project that serves as a model for developing an Urban Forestry Management Plan to reduce stormwater runoff and urban heat.
Integrate Human & Environmental Well-being	NCS Action 10 Community Science: Include students and community members as leaders to conduct environmental restoration and community science projects for ecosystem health.
	NCS Action 11 Connection to Nature: Provide and support programming that reconnects community members of all ages to nature to improve mental health and help restore relationships to the land.
Grow our Green Economy	NCS Action 12 Nature-based Green Jobs: Work with partners to support to build a skilled workforce for green stormwater infrastructure, urban forestry, habitat restoration, and regenerative agriculture.



GENERATE REPORT

+ Pierce, Washington, United States X 
 - 
 22nd Ave
 152nd St E
 152nd Ave E
 Elmer Creek



Legend

Current Canopy

0% 50% 100%

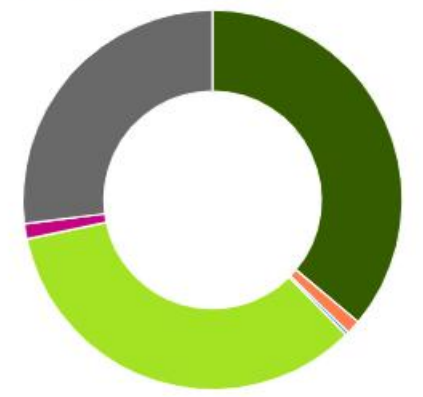
Raster Layers

- Current Canopy
- Historical Canopy

**Census Block Group ID:
530530713064**

State	WA
Total Assessed Area	449 acres
Historical Canopy (2017)	42% (188 acres)
Current Canopy (2023)	36.2% (162 acres)
Loss in Canopy	5.7% (-26 acres)
Relative Canopy Change	-13.7%
Urban Heat Index	3

Land Cover Classification



Tree Canopy	36.1%
Shrub	1.2%
Water	0.3%
Herbaceous	34.1%
Bare Soil	1.3%
Impervious	27%

Urban Forestry Management Plan



GOAL

maximize benefits of trees to reduce heat, stormwater runoff, and improve community health.

INTERNAL WORKGROUP

- Office of Resilience and Climate Action (PPW)
- Long Range Planning (PPW)
- Surface Water Management (PPW)
- Maintenance and Operations (PPW)
- Development Services (PPW)
- Office of the County Engineer (PPW)
- Parks

EXTERNAL COLLABORATION

- Tribes
- Pierce County cities

FUNDING

- Grant from WA Dept of Ecology to Puyallup-White River Watershed Council to hire a consultant to assist Pierce County through plan process, 2026-2027



Urban Forest Plan Deliverables



- recommendations on code updates and design standards to preserve and expand tree canopy/green stormwater infrastructure (GSI),
 - packaged as models for adoption by the county and other jurisdictions to support regional urban forestry alignment,
- opportunities for cross-jurisdictional actions,
- locations of priority sites for new tree planting and GSI,
- budgets to complete these priority installations,
- maintenance plans for both existing and new trees/GSI on Pierce County-owned lands
- guidance for planting and maintaining a resilient urban forest for County and partner use



Community Tree Planting



- Focused on urban, unincorporated Pierce County
- Private property tree planting program
- Two-year contract funded through County's 2026/2026 budget
- Prioritizes public engagement and partnership building
- Two-tier approach:
 - Contractor will work in highest priority neighborhoods to plant trees on private property,
 - Contractor will host community tree education and giveaway events across larger Parkland-Spanaway-Midland and South Hill geography
- RPF and Scope of Work for the Community Tree Planting program is at [Project Detail](#) .



S2030 Workgroups



Electric Vehicle Supply Equipment

Lead: Eurydice Pentz
In-progress



Building Decarbonization

Lead: Stephanie Leisle
Starting Q2



Urban Forestry Management Plan

Lead: Ann Koenig
Starting Q1



Heat Mitigation Strategy

Lead: Carlie Stowe
Starting Q1



Resilient Design: Flooding

Lead: Greta Holmstrom
In-progress



Salmon Recovery Operational Plan

Leads: Mary Krauszer, Sean Goldsmith, Josh Benton
In-progress



Land Conservation

Lead: Chris Chaput
Starting Q3



Sustainability 2030 Board

A cross-departmental leadership group to:

- ✓ advance the Sustainability 2030 Plan,
- ✓ make critical decisions,
- ✓ and budget appropriately for the work.



Sustainability 2030 Board



Board Member Expectations:

1. ATTEND QUARTERLY MEETINGS

- Structured around S2030 biannual updates to Council

2. PARTICIPATE IN DECISION-MAKING

- Advance Executive orders, ordinances, capital plans, budgets

3. DEMONSTRATE SUSTAINABILITY LEADERSHIP FOR STAFF

- Champion department-level work

Explore the Sustainability 2030 Plan

www.piercecountywa.gov/2058/Sustainability-2030





Pierce County Urban Forestry Actions

Thank you



Ann Koenig

Urban Forest Planner

Planning & Public Works | Office of Resilience & Climate Action

(253) 798-4604

she/her

Ann.Koenig@piercecountywa.gov



Thurston County Tree Canopy

Claire Swearingen, Thurston County

LIO Collective Action Plan

Floodplains and Estuaries



THURSTON COUNTY

WASHINGTON

SINCE 1852

Tree Canopy in Thurston County

Highlights from the Tree Canopy Assessment
Thurston 2045, and County Code

Alliance for a Healthy South Sound, February 19, 2025



What is the Tree Canopy Assessment?

A study of tree canopy cover in rural Thurston County that includes information about...

- Where tree canopy is located
- Where other kinds of land cover are located
- Areas with restoration potential
- Areas where forests encroach on prairie habitat



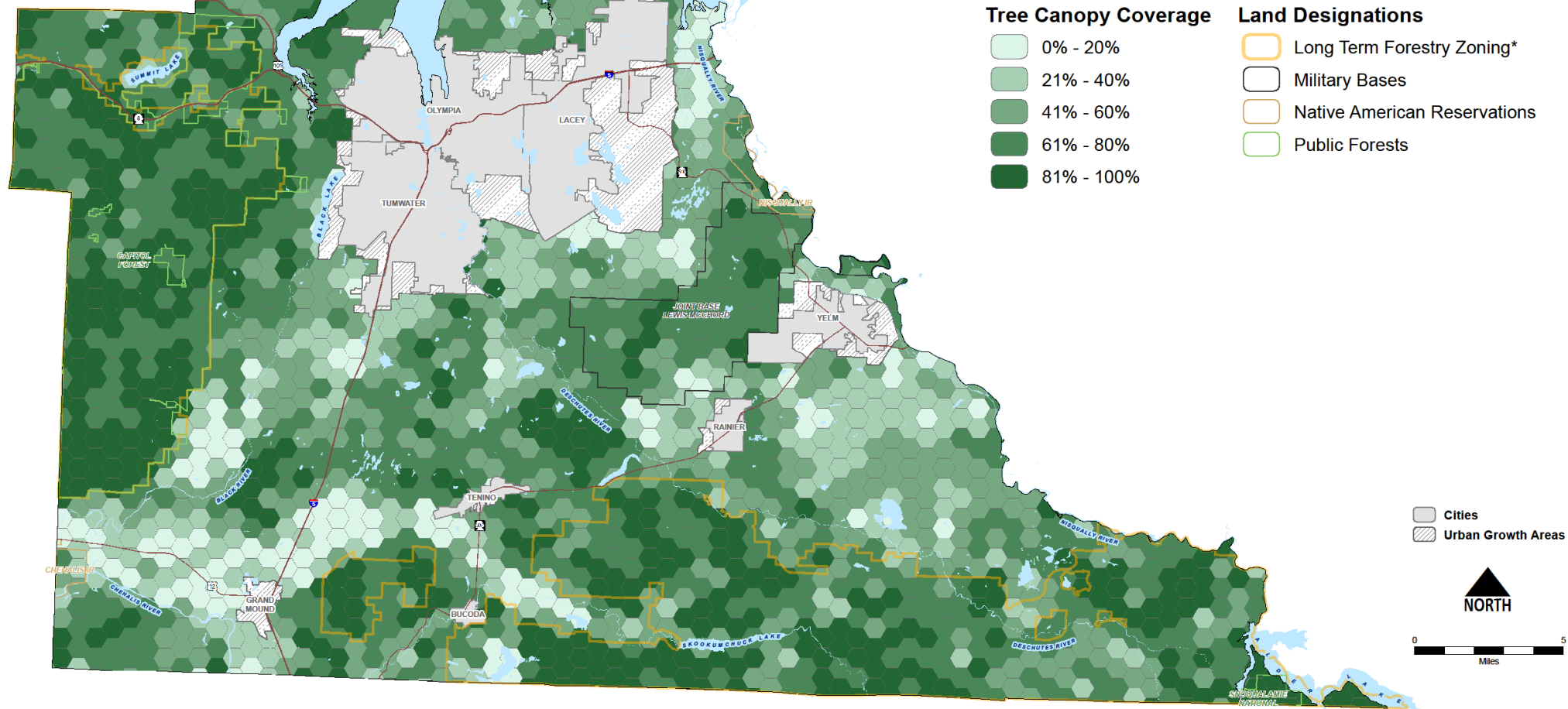
About the Maps

The tree canopy report contains over 15 maps. Some important things to know about the maps:

- Do not include Cities or UGAs
- Organized in 250-acre Hexagons
- Not site-specific
- Based on LiDAR data with 97% accuracy
- Accompanied by tables and narrative



Thurston County Tree Canopy 2022



DISCLAIMER: Thurston County makes every effort to ensure that this map is a true and accurate representation of the work of County Government. However, the county and all related personnel make no warranty, express or implied, regarding the accuracy, completeness or timeliness of any information disclosed on this map. Nor does the County accept liability for any damage or injury caused by the use of this map.

To the fullest extent permissible pursuant to applicable law, Thurston County disclaims all warranties, express or implied, including, but not limited to implied warranties of merchantability, data fitness for a particular purpose, and non-infringement of proprietary rights. Under no circumstances, including, but not limited to negligence, shall Thurston County be liable for any direct, indirect, incidental, special or consequential damages that result from the use of, or the inability to use, Thurston County materials.

Document Path:

The information included on this map has been compiled by Thurston County staff from a variety of sources and is subject to change without notice. Additional elements may be present in reality that are not represented on the map. Other photos and other data may not align. The boundaries depicted by these datasets are approximate. This document is not intended for use as a survey product.

ALL DATA IS EXPRESSLY PROVIDED AS IS AND WITH ALL FAULTS. Thurston County makes no representation or warranty, express or implied, as to accuracy, completeness, timeliness, or rights to the use of such information. In no event shall Thurston County be liable for direct, indirect, incidental, consequential, special or lost damages of any kind, including, but not limited to, lost revenues or lost profits, real or anticipated, resulting from the use, misuse or reliance of the information contained on this map. If any portion of this map or disclaimer is missing or altered, Thurston County removes itself from all responsibility from the map and the data contained within. The burden for determining fitness for use lies entirely with the user and the user is solely responsible for understanding the accuracy limitation of the information contained in this map.

Authorized for 3rd Party reproduction for personal use only.



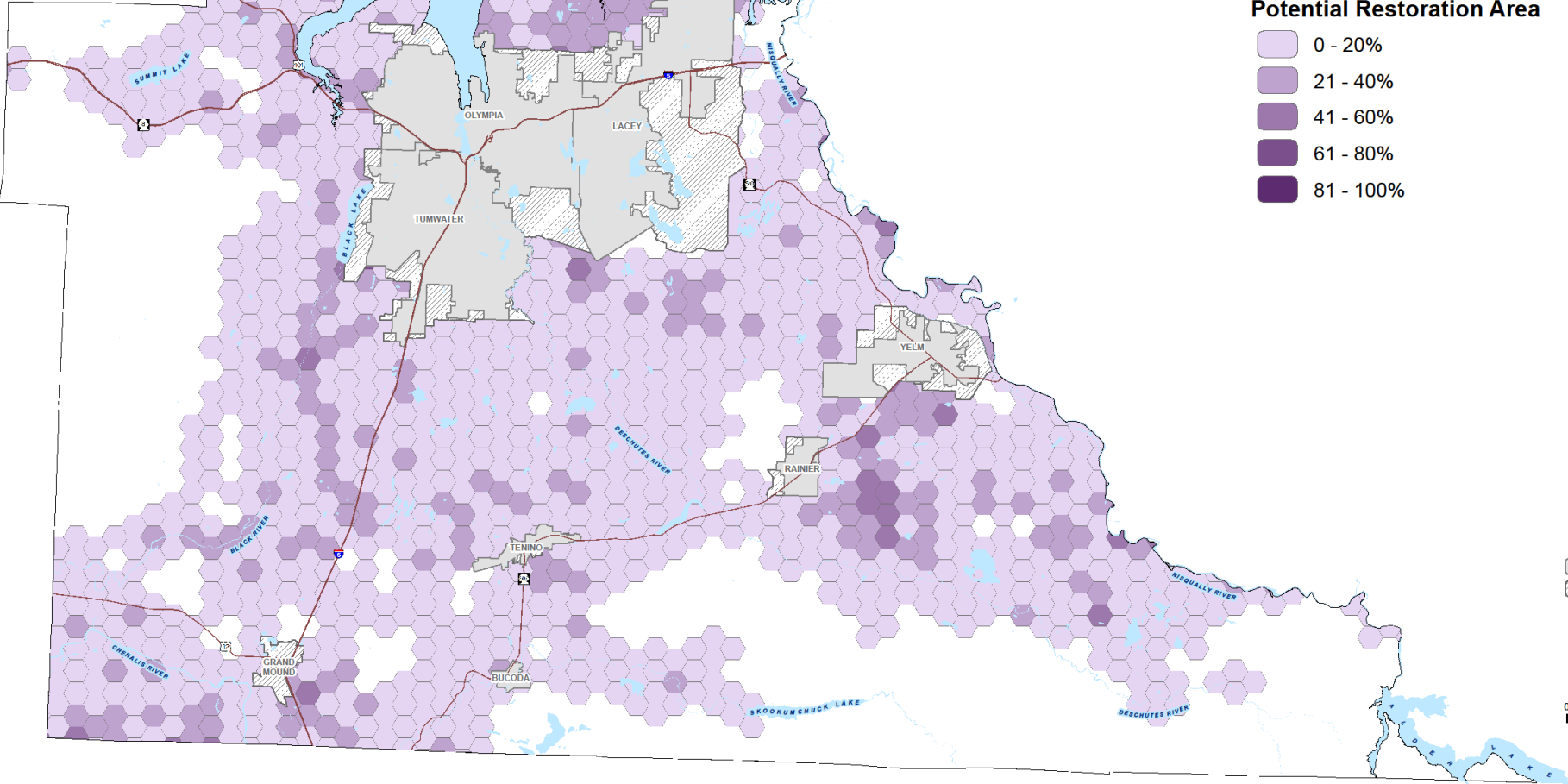
Date: 11/22/2024 by WE



Map 1: Tree Canopy

- Over 250,000 acres of tree canopy in rural Thurston County
- Canopy covers 61% of rural county land
- 68% of tree canopy is on privately owned land
- 48% of tree canopy is on land zoned for residential uses


Thurston County Potential Tree Canopy Restoration 2022

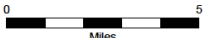


Potential Restoration Area

- 0 - 20%
- 21 - 40%
- 41 - 60%
- 61 - 80%
- 81 - 100%

Cities
 Urban Growth Areas


NORTH


 0 5
 Miles

DISCLAIMER: Thurston County makes every effort to ensure that this map is a true and accurate representation of the work of County Government. However, the county and all related personnel make no warranty, express or implied, regarding the accuracy, completeness, or operability of any information disclosed on this map. Nor does the County accept liability for any damage or injury caused by the use of this map.

To the fullest extent permissible pursuant to applicable law, Thurston County disclaims all warranties, express or implied, including, but not limited to implied warranties of merchantability, data fitness for a particular purpose, and non-infringement of proprietary rights.

Under no circumstances, including, but not limited to negligence, shall Thurston County be liable for any direct, indirect, incidental, special or consequential damages, but result from the use of, or the inability to use, Thurston County materials.

Document Path: S:\Projects\Tree_Canopy2024_Analysis\MXD\PotentialRestoration_hexagons.mxd

The information included on this map has been compiled by Thurston County staff from a variety of sources and is subject to change without notice. Additional elements may be present in reality that are not represented on the map. Ortho-photos and other data may not align. The boundaries depicted by these datasets are approximate. This document is not intended for use as a survey product.

ALL DATA IS EXPRESSLY PROVIDED 'AS IS' AND 'WITH ALL FAULTS'. Thurston County makes no representations or warranties, express or implied, as to accuracy, completeness, timeliness, or rights to the use of such information. In no event shall Thurston County be liable for direct, indirect, incidental, consequential, special, or tort damages of any kind, including, but not limited to, lost revenues or lost profits, real or anticipated, resulting from the use, misuse or reliance of the information contained on this map. If any portion of this map or disclaimer is missing or altered, Thurston County removes itself from all responsibility from the map and the data contained within. The burden for determining fitness for use lies entirely with the user and the user is solely responsible for understanding the accuracy limitation of the information contained in this map.

Authorized for 3rd Party reproduction for personal use only.



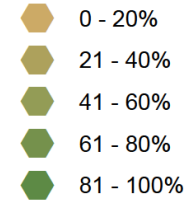
Map 2: Potential Canopy Restoration

- Factors: Absence of tree canopy, current land use, prairie habitat
- High potential: Little tree canopy and no competing land uses or habitats
- Prairies and LTA are low potential

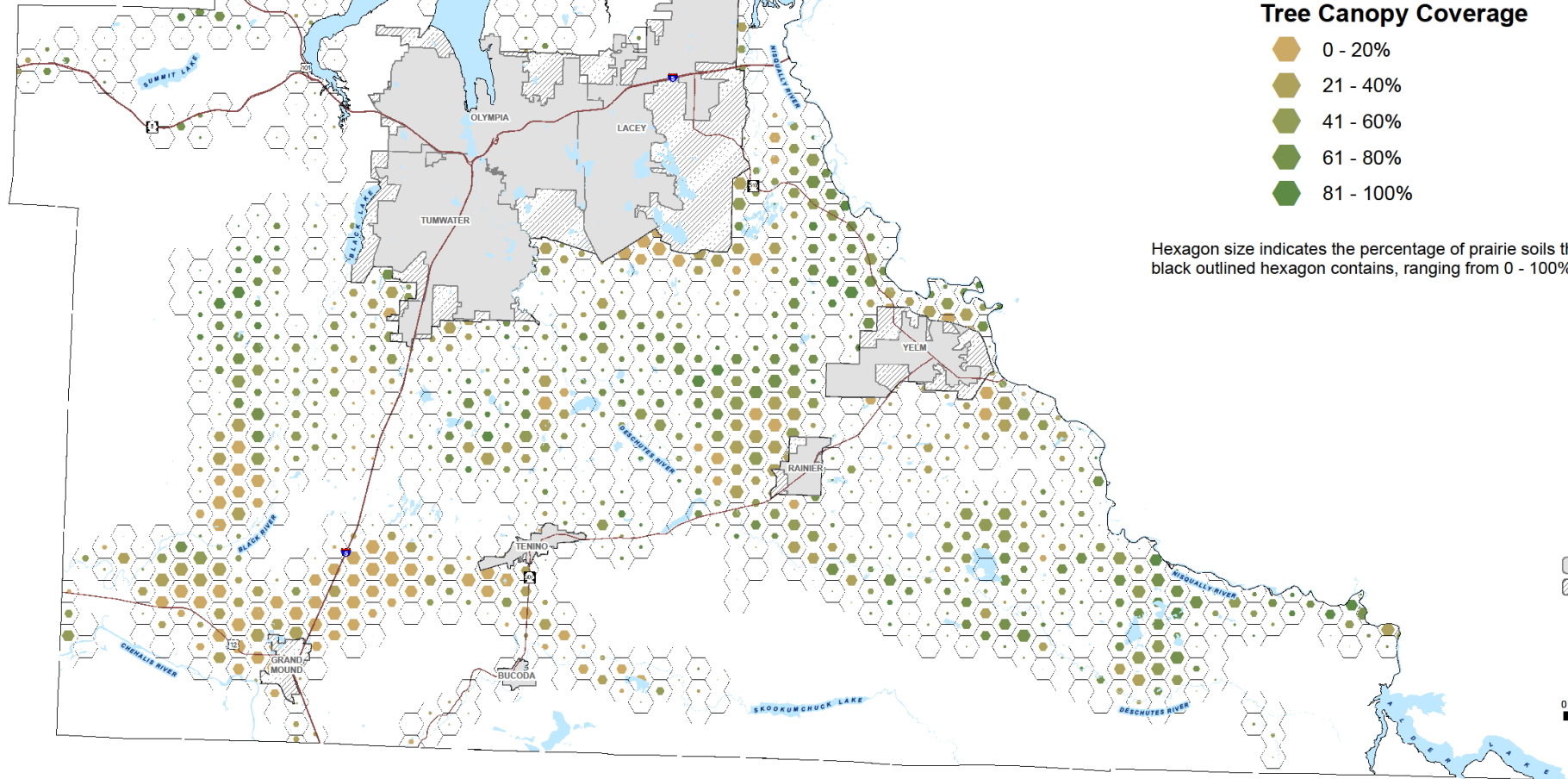


Thurston County Tree Canopy on Prairie Soils 2022

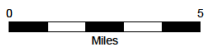
Tree Canopy Coverage



Hexagon size indicates the percentage of prairie soils that each black outlined hexagon contains, ranging from 0 - 100%.



Cities
 Urban Growth Areas



DISCLAIMER: Thurston County makes every effort to ensure that this map is a true and accurate representation of the work of County Government. However, the county and all related personnel make no warranty, express or implied, regarding the accuracy, completeness or governance of any information disclosed on this map. Nor does the County accept liability for any damage or injury caused by the use of this map.

To the fullest extent permissible pursuant to applicable law, Thurston County disclaims all warranties, express or implied, including, but not limited to implied warranties of merchantability, data fitness for a particular purpose, and non-infringement of proprietary rights.

Under no circumstances, including, but not limited to negligence, shall Thurston County be liable for any direct, indirect, incidental, special or consequential damages that result from the use of, or the inability to use, Thurston County materials.

Document Path:

The information included on this map has been compiled by Thurston County staff from a variety of sources and is subject to change without notice. Additional elements may be present in reality that are not represented on the map. Ortho-photos and other data may not align. The boundaries depicted by these datasets are approximate. This document is not intended for use as a survey product.

ALL DATA IS EXPRESSLY PROVIDED 'AS IS' AND WITH ALL FAULTS. Thurston County makes no representations or warranties, express or implied, as to accuracy, completeness, timeliness, or rights to the use of such information. In no event shall Thurston County be liable for direct, indirect, incidental, consequential, special, or tort damages of any kind, including, but not limited to, lost revenues or lost profits, real or anticipated, resulting from the use, misuse or reliance of the information contained on this map. If any portion of this map or disclaimer is missing or altered, Thurston County removes itself from all responsibility from the map and the data contained within. The burden for determining fitness for use lies entirely with the user and the user is solely responsible for understanding the accuracy limitation of the information contained in this map.

Authorized for 3rd Party reproduction for personal use only.



Date: 11/8/2024 by WE



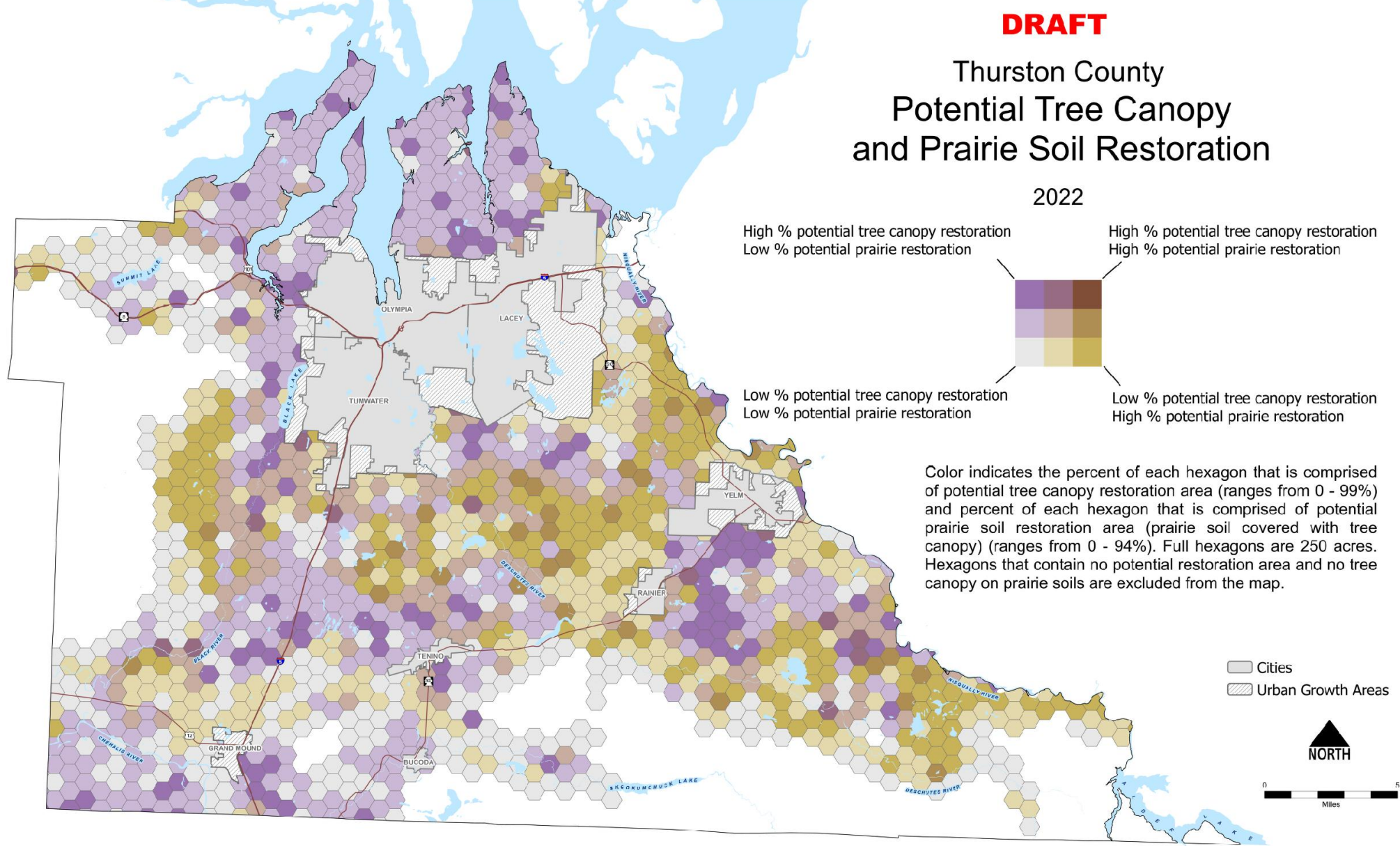
Map 3: Tree Canopy on Prairie Soils

- Size of hexagon: Amount of prairie soil
- Color of hexagon: amount of tree canopy
- Oregon White Oak is threatened by Douglas Fir encroachment
- Prairies are protected and culturally significant, and have a positive impact on climate

DRAFT

Thurston County Potential Tree Canopy and Prairie Soil Restoration

2022



DISCLAIMER: Thurston County makes every effort to ensure that this map is a true and accurate representation of the work of County Government. It reserves the county and all related personnel liable to warranty expense or impact, regarding the accuracy, completeness or convenience of any information disclosed on this map. No does the County accept liability for any damage or injury caused by the use of this map.

To the fullest extent permissible pursuant to applicable law, Thurston County disclaims all warranties, express or implied, including but not limited to implied warranties of merchantability, fitness for a particular purpose, and non-infringement of proprietary rights. Under no circumstances, including but not limited to negligence, shall Thurston County be liable for any direct, indirect, incidental, special or consequential damages that result from the use of or the inability to use, Thurston County materials.

Document Path: S:\Projects\Tree_Canopy\02\Analysis\PrairieSoils_ICP\PrairieSoils_IC.aprx

The information included on this map has been compiled by Thurston County staff from a variety of sources and is subject to change without notice. Additional elements may be present in reality that are not represented on this map. Other photos and other data may not align. The boundaries depicted by these sources are approximate. This document is not intended for use as a survey product.

ALL DATA IS EXPRESSLY PROVIDED AS IS AND WITH ALL FAULTS: Thurston County makes no representations or warranties, express or implied, as to accuracy, completeness, timeliness, or rights to the use of such information. In no event shall Thurston County be liable for direct, indirect, incidental, consequential, special or lost damages of any kind, including but not limited to, lost revenue or lost profits, that or otherwise, resulting from the use, misuse or reliance of the information contained on this map, if any portion of this map or disclaimer is missing or altered. Thurston County reserves itself from all responsibility from the map and the data contained within. The user for determining fitness for use lies entirely with the user and the user is solely responsible for understanding the accuracy and the data contained in this map.

Authorized for 3rd Party reproduction for personal use only.



Date: 4/15/2022 by WE

Map 4: Canopy and Prairie Restoration

- Purple: Areas with high tree canopy restoration potential
- Brown: Areas where tree canopy covers prairie soils
- Compares areas for tree canopy restoration and prairie restoration
- Goal: To focus and prioritize restoration efforts



Using the Tree Canopy Assessment

The Tree Canopy Assessment is intended to help the County and other regional planning partners:

- Prioritize programmatic restoration efforts
- Develop regulatory tools for tree canopy conservation
- Apply for funding to support tree canopy restoration efforts
- Understand relationships between tree canopy and other parts of the environment
- Restore prairie and Oregon white oak habitats.
- Plan for carbon sequestration efforts to combat climate change



Tree Conservation Code (Forest Lands Conversion Ordinance)

- Applies when trees are removed outside of DNR-managed forest practices, i.e. when trees are removed without an intent to replant
- Places moratoriums on development when trees are removed without a permit
- Sets standards for permitting, tree retention, and replanting





Code Updates and Monitoring

- Qualitative and quantitative monitoring of 1st year of adoption
- Permit statistics, staff interviews
- Planned expansions of applicability, i.e. aligning with subdivision code
- Improving outreach and staff training

Thurston 2045

- Thurston 2045 climate chapter set policies for tree protection and creating a forest management plan
- Environment chapter utilized the tree canopy report for analysis
 - Sets policies for canopy monitoring, outreach, and tree protection



Other County Programs

- CAO: The County has a grant to study tree species and Oak prairies to inform riparian management zones, and build connections between the CAO and prairie restoration
- HCP: The tree canopy report may help inform prairie species habitat restoration in the future





Thank you!

Claire Swearingen

Associate Planner

claire.swearingen@co.thurston.wa.us

(360) 968-9989

LIO Action Plans

- Describe the work that needs to happen locally to advance the Puget Sound Action Agenda
- Describe what is needed (funding, capacity, new policies, etc.) to advance that work
- This will be AHSS's 3rd Action Plan following OSS & Healthy Shorelines Action Plan topics

Action Plans Include...

- Clear connection between the local barriers, pressures, opportunities, proposed solutions (i.e., actions), and the Action Agenda Strategies and Actions
- Clear project/action description (**who** would like to do **what** and **where** to achieve an outcome)
- A distinction between local and regional level actions
- Estimated cost for local work (rough estimates are fine)
- Staff/capacity needs for local work (rough estimates are fine)

Action Plans do not need to be perfect –
adaptively managing them will be an iterative process

Action Agenda Strategies for Floodplains & Estuaries

1

Increase and accelerate implementation of habitat acquisition and restoration projects as prioritized in watershed salmon recovery plans.

2

Incorporate the economic risks and costs of development into land use planning in floodplain and estuary habitats.

3

Support a region-wide plan to restore Puget Sound by building public and political support, developing partnerships, securing funding, simplifying permits, and monitoring progress to improve outcomes for fish populations, reduce flooding, and support agricultural viability (farm, fish, flood).

4

Prioritize, design, and implement reach-scale restoration and protection projects within a river basin, watershed, and/or estuary.

5

Expand floodplain and estuary habitat protection through regulations and incentives.

Floodplains & Estuaries Action Plan: Timeline



Action Agenda Strategy Themes

- Habitat Acquisition & Restoration
- Land Use Planning & Flood Risk
- Regional Coordination (Farm, Fish, Flood)
- Reach-Scale Project Implementation
- Regulatory Protections & Incentives

AHSS LIO Partners' Contribution to the Floodplains & Estuaries Action Plan

1. Add to a pre-compiled list of Floodplains & Estuaries problems, opportunities, and projects and consider:
 - What projects are missing?
 - Which organizations (local actors) are missing?
 - What work needs to happen at the local level? What work needs to happen at the state or Puget Sound level?
 - What projects do we want to focus on in the next 3-5 years?
2. Review the Floodplains & Estuaries strategies from the 2026-2030 Action Agenda
3. Connect identified problems, opportunities, and projects to either local or state-level strategies
4. Review the 44 regional Floodplains & Estuaries actions from the 2026-2030 Action Agenda to identify any gaps, determine which actions are most relevant to the South Sound, and note which ones don't apply.

Floodplains & Estuaries Projects

- **Pierce County:** Shoreline Planning and design for **Chambers Bay Estuary** restoration project
- **Oly Ecosystems:** Conducting restoration planning and design (pending funding from NFWF grant) on a 3-mile river stretch of the **Deschutes**.
- **BNSF & Nisqually Tribe: Sequalitchew Creek** restoration project with a BNSF crossing along with other small estuaries and crossings along the narrows.
- **Ecology & other stakeholders: Deschutes Estuary Restoration** project will reconnect the Deschutes River to Puget Sound by returning Capitol Lake to a natural estuary
- **Squaxin Island Tribe, MCD, & SPSSEG:** Ongoing restoration project at **Shelton Harbor** to restore 48 acres of estuary habitat

Floodplains & Estuaries Opportunities

- Utilize Biodiversity management plans to identify projects
- Continued HSIL capacity building funding to support projects with short-term capacity, training, and workforce development
- Identify a model to reduce the administrative burden to move money between project partners
- Incorporate natural resource priorities into other aspects of planning such as transportation
- Compile South Puget Sound information into a website, archive, or hub to house information

Floodplains & Estuaries Problems

- **South Sound pocket estuary protection and restoration:** Tension between doing many small projects that have a lot of impact across the landscape versus focusing on larger projects that bring in more funding.
- Lack of staffing and capacity for smaller jurisdictions to manage projects and apply for grants
- Challenge of coordinating diverse approaches across multiple jurisdictions for a regional strategy.



LIO Updates

- South Sound Technical Team Restart
- Discuss interest in an in-person stormwater focused meeting
- Capacity Funding Needs



Round Robin Announcements



Thank you for
being here!

THE NEXT AHSS COUNCIL
MEETING IS ON APRIL 30,
2026!